



BLUELINE[®]
Vacuum Technologies, Inc.

KIT DE REPARACIÓN

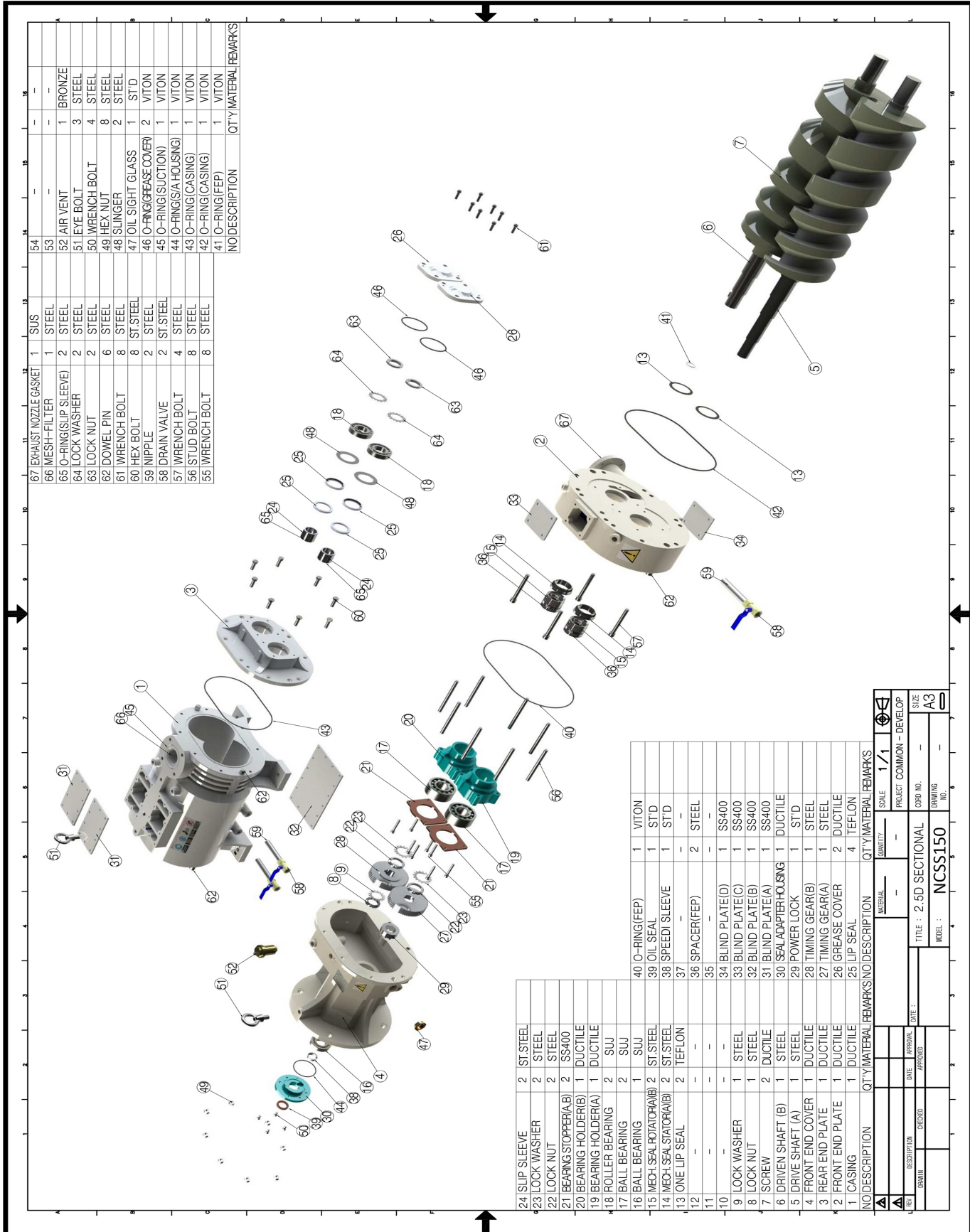
ALCHEMIST[®] N

Lista de piezas de repuesto

| Descripción | Modelo | No. de parte | No. posición | Alchemist 150 | Alchemist 300/400/800 | Alchemist 1500 |
|---|--------|--------------|--------------|---------------|-----------------------|----------------|
| 1. Sello mecánico | | 2620 | 15 | 2 | 2 | 2 |
| 2. Retén sencillo (REP) | | 2630 | 25 | 4 | 6 | 6 |
| 3. Retén sencillo (FEP) | | 2640 | 13 | 2 | 2 | 2 |
| 4. Slip sleeve | | 2650 | 24 | 2 | 2 | 2 |
| 5. Sello de aceite | | 2660 | 39 | 1 | 1 | 1 |
| 6. Speedi sleeve | | 2670 | 38 | 1 | 1 | 1 |
| 7. Rodamiento de rodillo | | 3010 | 18 | 2 | 2 | 2 |
| 8. Rodamiento de bola de contacto angular | | 3020 | 17 | 2 | 2 | 2 |
| 9. Rodamiento de bola | | 3030 | 16 | 1 | 1 | 1 |
| 10.O-ring (línea de agua) | | 3110 | 40 | 2 | 2 | 2 |
| 11. O-ring (Slip Sleeve) | | 3120 | 65 | 2 | 2 | 2 |
| 12. O-ring (Adaptador de sello) | | 3130 | 44 | 1 | 1 | 1 |
| 13. O-ring (Succión) | | 3150 | 45 | 1 | 1 | 1 |
| 14.O-ring (FEP) | | 3160 | 41 | 1 | 1 | 1 |
| 15.O-ring (Cubierta FEP) | | 3170 | 42 | 1 | 1 | 1 |
| 16.O-ring (Cubierta REP) | | 3180 | 43 | 1 | 1 | 1 |
| 17.O-ring (Cubierta de grasa) | | 3190 | 46 | 2 | 2 | 2 |
| 18.Tuerca de bloqueo | | 3210 | 8 | 1 | 3 | 1 |
| 19.Arandela de seguridad | | 3220 | 9 | 1 | 3 | 1 |
| 20.Tuerca de bloqueo REP | | 3230 | 22 | 4 | 2 | 4 |
| 21.Arandela de seguridad REP | | 3240 | 23 | 4 | 2 | 4 |
| 22. Gasket | | 3550 | 67 | 1 | 1 | 1 |
| 23.Malla de filtro (succión) | | 3590 | 66 | 1 | 1 | 1 |

Las siguientes listas son piezas de repuesto recomendadas para la revisión general e incluyen todos los sellos, rodamientos y otras piezas misceláneas que normalmente no son reutilizables después del desmontaje.

*Los engranajes de distribución no están incluidos en el kit de reparación y deben pedirse por separado.

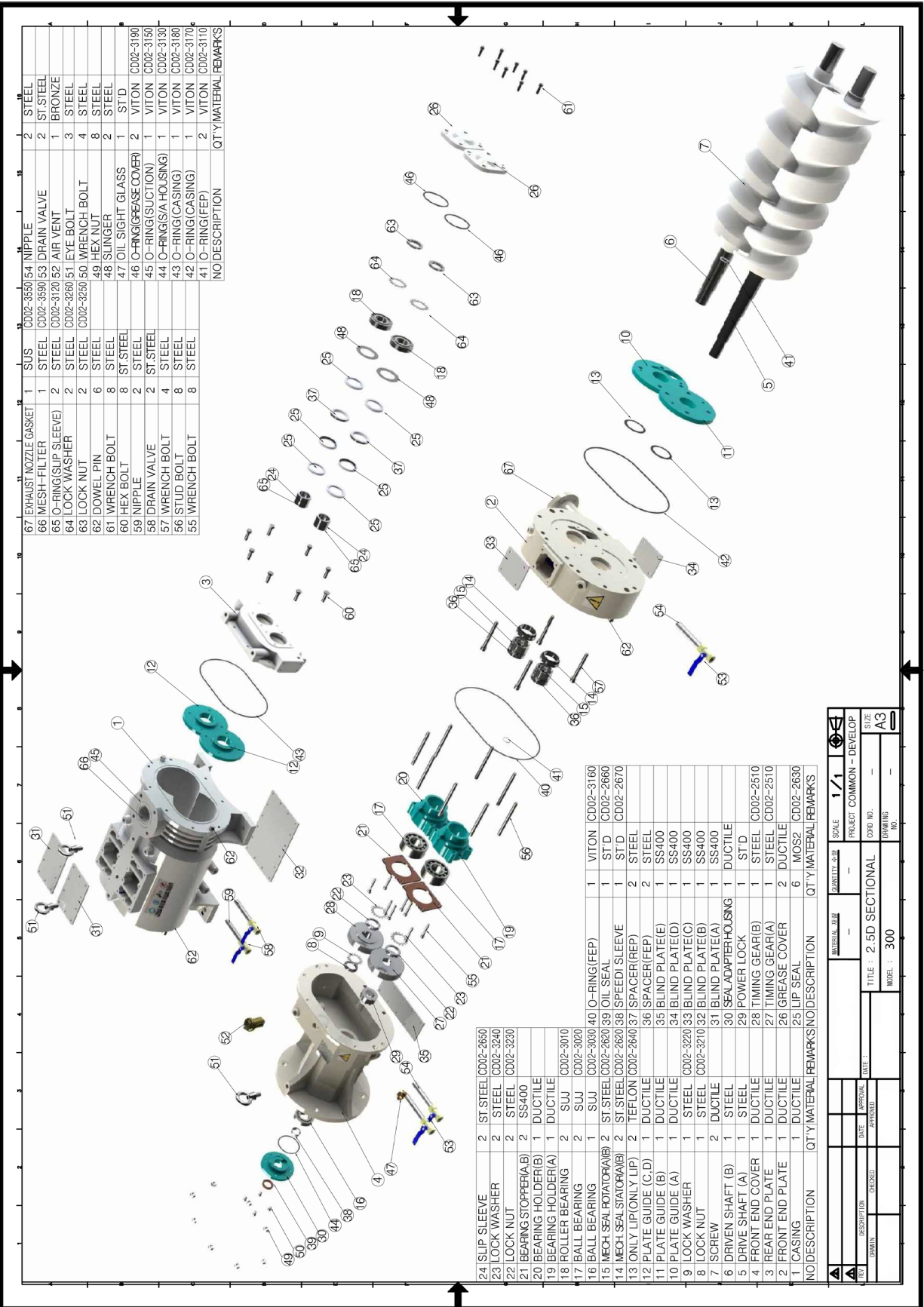


| NO | DESCRIPTION | QTY | MATERIAL | REMARKS |
|----|-----------------------|-----|----------|---------|
| 54 | EXHAUST NOZZLE GASKET | 1 | SUS | |
| 53 | MESH-FILTER | 1 | STEEL | |
| 52 | AIR VENT | 1 | BRONZE | |
| 51 | EYE BOLT | 3 | STEEL | |
| 50 | WRENCH BOLT | 4 | STEEL | |
| 49 | HEX NUT | 8 | STEEL | |
| 48 | SLINGER | 2 | STEEL | |
| 47 | OIL SIGHT GLASS | 1 | STD | |
| 46 | O-RING(GREASE COVER) | 2 | VITON | |
| 45 | O-RING(SUCTION) | 1 | VITON | |
| 44 | O-RING(A HOUSING) | 1 | VITON | |
| 43 | O-RING(CASING) | 1 | VITON | |
| 42 | O-RING(CASING) | 1 | VITON | |
| 41 | O-RING(FEP) | 1 | VITON | |

| | | | | |
|----|----------------------|---|----------|--|
| 24 | LIP SLEEVE | 2 | ST STEEL | |
| 23 | LOCK WASHER | 2 | STEEL | |
| 22 | LOCK NUT | 2 | STEEL | |
| 21 | BEARING STOPPER(A) | 2 | SS400 | |
| 20 | BEARING HOLDER(B) | 1 | DUCTILE | |
| 19 | BEARING HOLDER(A) | 1 | DUCTILE | |
| 18 | ROLLER BEARING | 2 | SUU | |
| 17 | BALL BEARING | 2 | SUU | |
| 16 | BALL BEARING | 1 | SUU | |
| 15 | MECH SEAL ROTATOR(A) | 2 | ST STEEL | |
| 14 | MECH SEAL STATOR(A) | 2 | ST STEEL | |
| 13 | ONE LIP SEAL | 2 | TEFLON | |
| 12 | | | | |
| 11 | | | | |
| 10 | | | | |
| 9 | LOCK WASHER | 1 | STEEL | |
| 8 | LOCK NUT | 1 | STEEL | |
| 7 | SCREW | 2 | DUCTILE | |
| 6 | DRIVEN SHAFT (B) | 1 | STEEL | |
| 5 | DRIVE SHAFT (A) | 1 | STEEL | |
| 4 | FRONT END COVER | 1 | DUCTILE | |
| 3 | REAR END PLATE | 1 | DUCTILE | |
| 2 | FRONT END PLATE | 1 | DUCTILE | |
| 1 | CASING | 1 | DUCTILE | |

| | | | | |
|----|---------------------|---|---------|--|
| 40 | O-RING(FEP) | 1 | VITON | |
| 39 | OIL SEAL | 1 | STD | |
| 38 | SPEEDY SLEEVE | 1 | STD | |
| 37 | | | | |
| 36 | SPACER(FEP) | 2 | STEEL | |
| 35 | | | | |
| 34 | BLIND PLATE(D) | 1 | SS400 | |
| 33 | BLIND PLATE(C) | 1 | SS400 | |
| 32 | BLIND PLATE(B) | 1 | SS400 | |
| 31 | BLIND PLATE(A) | 1 | SS400 | |
| 30 | SEA ADAPTER HOUSING | 1 | DUCTILE | |
| 29 | POWER LOCK | 1 | STD | |
| 28 | TIMING GEAR(B) | 1 | STEEL | |
| 27 | TIMING GEAR(A) | 1 | STEEL | |
| 26 | GREASE COVER | 2 | DUCTILE | |
| 25 | LIP SEAL | 4 | TEFLON | |

| NO | DESCRIPTION | QTY | MATERIAL | REMARKS |
|----|-------------|-----|----------|---------|
| 59 | SCREW | 1 | SS400 | |
| 58 | SCREW | 1 | SS400 | |
| 57 | SCREW | 1 | SS400 | |
| 56 | SCREW | 1 | SS400 | |
| 55 | SCREW | 1 | SS400 | |
| 54 | SCREW | 1 | SS400 | |
| 53 | SCREW | 1 | SS400 | |
| 52 | SCREW | 1 | SS400 | |
| 51 | SCREW | 1 | SS400 | |
| 50 | SCREW | 1 | SS400 | |
| 49 | SCREW | 1 | SS400 | |
| 48 | SCREW | 1 | SS400 | |
| 47 | SCREW | 1 | SS400 | |
| 46 | SCREW | 1 | SS400 | |
| 45 | SCREW | 1 | SS400 | |
| 44 | SCREW | 1 | SS400 | |
| 43 | SCREW | 1 | SS400 | |
| 42 | SCREW | 1 | SS400 | |
| 41 | SCREW | 1 | SS400 | |
| 40 | SCREW | 1 | SS400 | |
| 39 | SCREW | 1 | SS400 | |
| 38 | SCREW | 1 | SS400 | |
| 37 | SCREW | 1 | SS400 | |
| 36 | SCREW | 1 | SS400 | |
| 35 | SCREW | 1 | SS400 | |
| 34 | SCREW | 1 | SS400 | |
| 33 | SCREW | 1 | SS400 | |
| 32 | SCREW | 1 | SS400 | |
| 31 | SCREW | 1 | SS400 | |
| 30 | SCREW | 1 | SS400 | |
| 29 | SCREW | 1 | SS400 | |
| 28 | SCREW | 1 | SS400 | |
| 27 | SCREW | 1 | SS400 | |
| 26 | SCREW | 1 | SS400 | |
| 25 | SCREW | 1 | SS400 | |
| 24 | SCREW | 1 | SS400 | |
| 23 | SCREW | 1 | SS400 | |
| 22 | SCREW | 1 | SS400 | |
| 21 | SCREW | 1 | SS400 | |
| 20 | SCREW | 1 | SS400 | |
| 19 | SCREW | 1 | SS400 | |
| 18 | SCREW | 1 | SS400 | |
| 17 | SCREW | 1 | SS400 | |
| 16 | SCREW | 1 | SS400 | |
| 15 | SCREW | 1 | SS400 | |
| 14 | SCREW | 1 | SS400 | |
| 13 | SCREW | 1 | SS400 | |
| 12 | SCREW | 1 | SS400 | |
| 11 | SCREW | 1 | SS400 | |
| 10 | SCREW | 1 | SS400 | |
| 9 | SCREW | 1 | SS400 | |
| 8 | SCREW | 1 | SS400 | |
| 7 | SCREW | 1 | SS400 | |
| 6 | SCREW | 1 | SS400 | |
| 5 | SCREW | 1 | SS400 | |
| 4 | SCREW | 1 | SS400 | |
| 3 | SCREW | 1 | SS400 | |
| 2 | SCREW | 1 | SS400 | |
| 1 | SCREW | 1 | SS400 | |

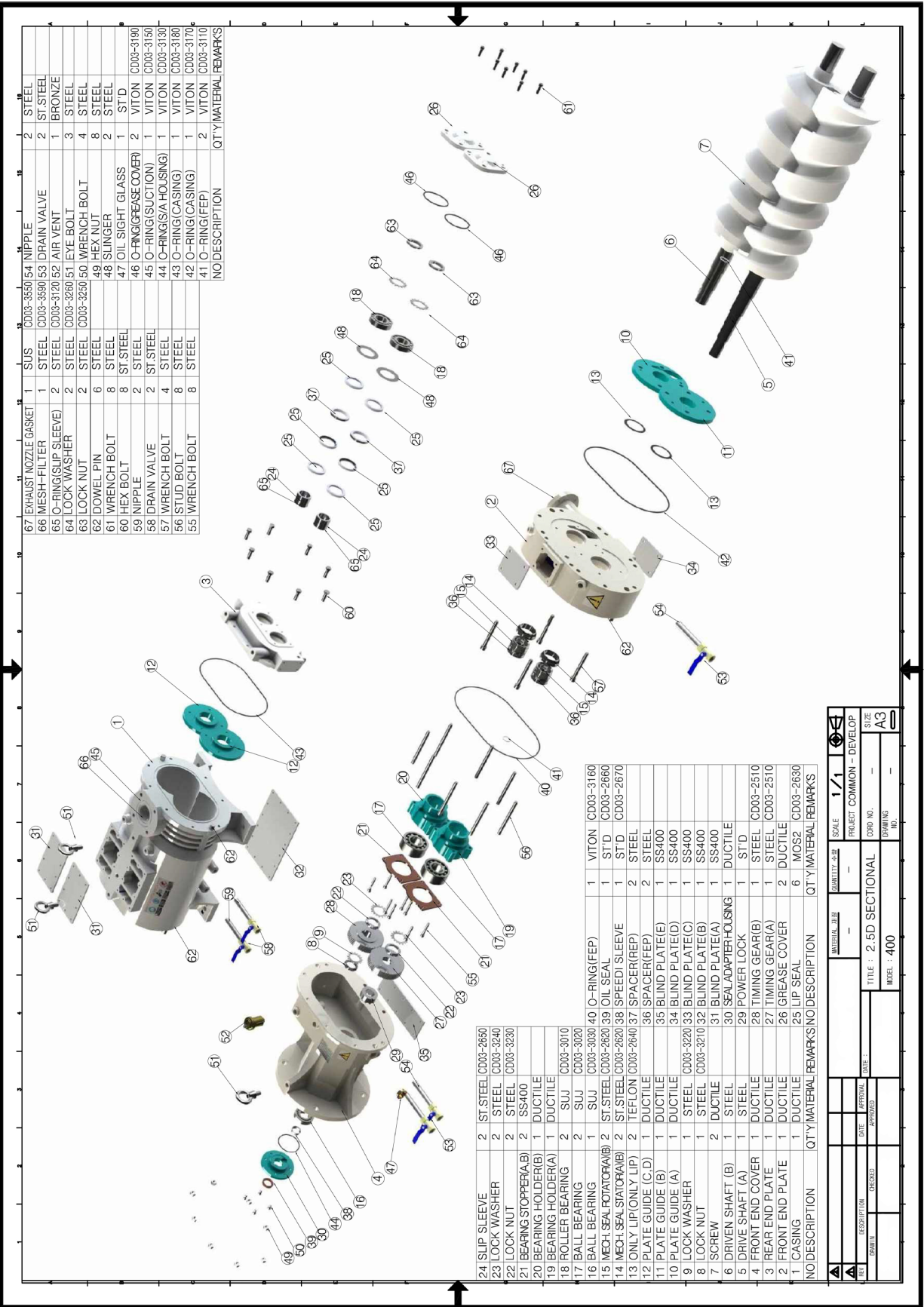


| NO | DESCRIPTION | QTY | MATERIAL | REMARKS |
|----|-----------------------|-----|----------|-----------|
| 67 | EXHAUST NOZZLE GASKET | 1 | SUS | CD02-3550 |
| 66 | MESH-FILTER | 2 | STEEL | CD02-3590 |
| 65 | O-RING(SLIP SLEEVE) | 1 | STEEL | CD02-3120 |
| 64 | LOCK WASHER | 2 | STEEL | CD02-3280 |
| 63 | LOCK NUT | 2 | STEEL | CD02-3250 |
| 62 | DOWEL PIN | 6 | STEEL | 49 |
| 61 | WRENCH BOLT | 8 | STEEL | 48 |
| 60 | HEX BOLT | 8 | STEEL | 47 |
| 59 | NIPPLE | 2 | STEEL | 46 |
| 58 | DRAIN VALVE | 2 | STEEL | 45 |
| 57 | WRENCH BOLT | 4 | STEEL | 44 |
| 56 | STUD BOLT | 8 | STEEL | 43 |
| 55 | WRENCH BOLT | 8 | STEEL | 42 |
| | | | | 41 |
| | | | | 40 |
| | | | | 39 |
| | | | | 38 |
| | | | | 37 |
| | | | | 36 |
| | | | | 35 |
| | | | | 34 |
| | | | | 33 |
| | | | | 32 |
| | | | | 31 |
| | | | | 30 |
| | | | | 29 |
| | | | | 28 |
| | | | | 27 |
| | | | | 26 |
| | | | | 25 |
| | | | | 24 |
| | | | | 23 |
| | | | | 22 |
| | | | | 21 |
| | | | | 20 |
| | | | | 19 |
| | | | | 18 |
| | | | | 17 |
| | | | | 16 |
| | | | | 15 |
| | | | | 14 |
| | | | | 13 |
| | | | | 12 |
| | | | | 11 |
| | | | | 10 |
| | | | | 9 |
| | | | | 8 |
| | | | | 7 |
| | | | | 6 |
| | | | | 5 |
| | | | | 4 |
| | | | | 3 |
| | | | | 2 |
| | | | | 1 |

| NO | DESCRIPTION | QTY | MATERIAL | REMARKS | NO | DESCRIPTION | QTY | MATERIAL | REMARKS |
|----|-------------------------|-----|----------|-----------|----|----------------------|-----------|----------|---------|
| 24 | SLIP SLEEVE | 2 | ST,STEEL | CD02-2650 | 1 | VITON | CD02-3160 | | |
| 23 | LOCK WASHER | 2 | STEEL | CD02-3240 | 1 | STD | CD02-2660 | | |
| 22 | LOCK NUT | 2 | STEEL | CD02-3230 | 1 | STD | CD02-2670 | | |
| 21 | BEARING STOPPER(A,B) | 2 | SS400 | | 2 | STEEL | | | |
| 20 | BEARING HOLDER(B) | 1 | DUCTILE | | 36 | SPACER(FEP) | | | |
| 19 | BEARING HOLDER(A) | 1 | DUCTILE | | 35 | BLIND PLATE(E) | | | |
| 18 | ROLLER BEARING | 2 | SUJ | CD02-3010 | 34 | BLIND PLATE(D) | | | |
| 17 | BALL BEARING | 2 | SUJ | CD02-3020 | 33 | BLIND PLATE(C) | | | |
| 16 | BALL BEARING | 1 | SUJ | CD02-3030 | 32 | BLIND PLATE(B) | | | |
| 15 | MECH SEAL ROTATOR(A)(B) | 2 | ST,STEEL | CD02-2620 | 31 | BLIND PLATE(A) | | | |
| 14 | MECH SEAL ROTATOR(A)(B) | 2 | ST,STEEL | CD02-2620 | 30 | SEAL ADAPTER HOUSING | | | |
| 13 | ONLY LIP(ONLY LIP) | 2 | TEFLON | CD02-2640 | 29 | POWER LOCK | | | |
| 12 | PLATE GUIDE (C/D) | 1 | DUCTILE | | 28 | TIMING GEAR(B) | | | |
| 11 | PLATE GUIDE (B) | 1 | DUCTILE | | 27 | TIMING GEAR(A) | | | |
| 10 | PLATE GUIDE (A) | 1 | STEEL | CD02-3220 | 26 | GREASE COVER | | | |
| 9 | LOCK WASHER | 1 | STEEL | CD02-3210 | 25 | LIP SEAL | | | |
| 8 | LOCK NUT | 2 | STEEL | CD02-3210 | 24 | | | | |
| 7 | SCREW | 2 | DUCTILE | | 23 | | | | |
| 6 | DRIVEN SHAFT (B) | 1 | STEEL | | 22 | | | | |
| 5 | FRONT SHAFT (A) | 1 | STEEL | | 21 | | | | |
| 4 | FRONT END COVER | 1 | DUCTILE | | 20 | | | | |
| 3 | FRONT END PLATE | 1 | DUCTILE | | 19 | | | | |
| 2 | FRONT END PLATE | 1 | DUCTILE | | 18 | | | | |
| 1 | CASING | 1 | DUCTILE | | 17 | | | | |

| | | | | |
|---------------|---------------|--------------------------|-------|-----|
| DATE APPROVED | DATE REVISION | DATE APPROVAL | SCALE | 1/1 |
| DESIGNATOR | ISSUED | PROJECT COMMON - DEVELOP | | |
| QUANTITY | 300 | TITLE : 2.5D SECTIONAL | | |
| | | MODEL : | | |
| | | SIZE | A3 | |

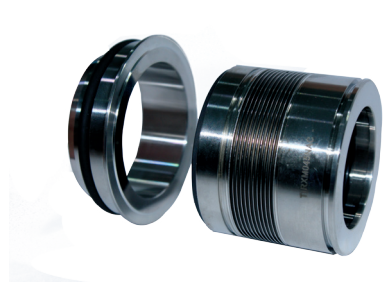




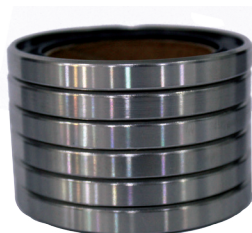
| NO | DESCRIPTION | QTY | MATERIAL | REMARKS |
|----|----------------------|-----|----------|-----------|
| 24 | SLIP SLEEVE | 2 | ST STEEL | CD03-2650 |
| 25 | LOCK WASHER | 2 | STEEL | CD03-3240 |
| 26 | LOCK NUT | 2 | STEEL | CD03-3230 |
| 27 | BEARING STOPPER(A) | 2 | SS400 | |
| 28 | BEARING HOLDER(B) | 1 | DUCTILE | |
| 29 | BEARING HOLDER(A) | 1 | DUCTILE | |
| 30 | ROLLER BEARING | 2 | SUJ | CD03-3010 |
| 31 | BALL BEARING | 2 | SUJ | CD03-3020 |
| 32 | MECH SEAL ROTATOR(A) | 2 | ST STEEL | CD03-2630 |
| 33 | MECH SEAL ROTATOR(B) | 2 | ST STEEL | CD03-2630 |
| 34 | MECH SEAL ROTATOR(C) | 2 | ST STEEL | CD03-2630 |
| 35 | ONLY LIP(ONLY LIP) | 2 | TEFLON | CD03-2640 |
| 36 | SPACER(FEP) | 2 | STEEL | |
| 37 | PLATE GUIDE (C,D) | 1 | DUCTILE | |
| 38 | PLATE GUIDE (B) | 1 | DUCTILE | |
| 39 | PLATE GUIDE (A) | 1 | DUCTILE | |
| 40 | LOCK WASHER | 1 | STEEL | CD03-3220 |
| 41 | LOCK NUT | 1 | STEEL | CD03-3210 |
| 42 | SCREW | 2 | DUCTILE | |
| 43 | DRIVEN SHAFT (B) | 1 | STEEL | |
| 44 | DRIVE SHAFT (A) | 1 | STEEL | |
| 45 | FRONT END COVER | 1 | DUCTILE | |
| 46 | REAR END PLATE | 1 | DUCTILE | |
| 47 | FRONT END PLATE | 1 | DUCTILE | |
| 48 | CASING | 1 | DUCTILE | |
| 49 | NO DESCRIPTION | 1 | DUCTILE | |

| | | | |
|---------|------------------|----------|----------------|
| SCALE | 1/1 | MATERIAL | SSR |
| PROJECT | COMMON - DEVELOP | | |
| DRW NO. | | TITLE | 2.5D SECTIONAL |
| DATE | | MODEL | 400 |
| SIZE | A3 | | |

Sello Mecánico
No. Posición 15



Retén Sencillo (REP)
No. Posición 25



Retén Sencillo (FEP)
No. Posición 13



Retén
No. Posición 39



Pista Retén
No. Posición 24



Manguito Antidesgaste
No. Posición 38



Rodamiento de Rodillo
No. Posición 18



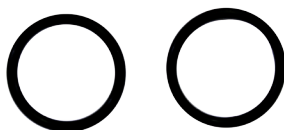
Rodamiento Contacto Angular
No. Posición 17



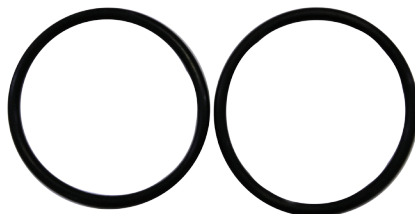
Rodamiento de Bola
No. Posición 16



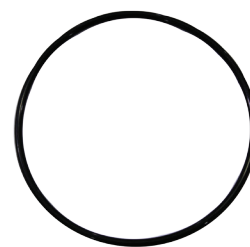
O-Ring (Línea de Agua)
No. Posición 40



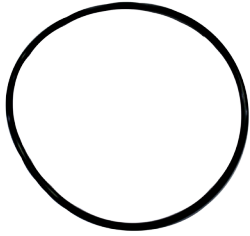
O-Ring (Pista Retén)
No. Posición 65



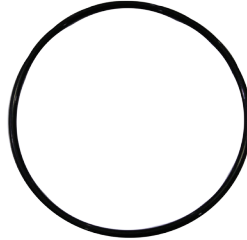
O-Ring (Adaptador)
No. Posición 44



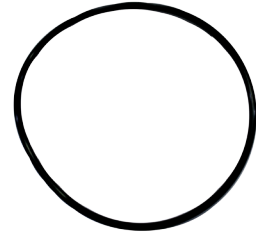
O-Ring (Succión)
No. Posición 45



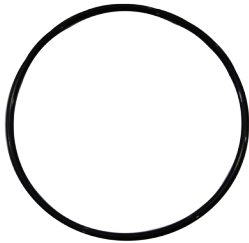
O-Ring (FEP)
No. Posición 41



O-Ring (Cubierta FEP)
No. Posición 42



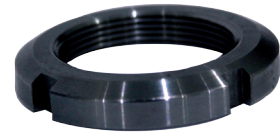
O-Ring (Cubierta REP)
No. Posición 43



O-Ring (Cubierta de grasa)
No. Posición 46



Tuerca de Bloqueo
No. Posición 8



Arandela de Seguridad
No. Posición 9



Tuerca de Bloqueo (REP)
No. Posición 22



Arandela de Seguridad (REP)
No. Posición 23



Malla de Filtro
No. Posición 66



Gasket
No. Posición 67

